

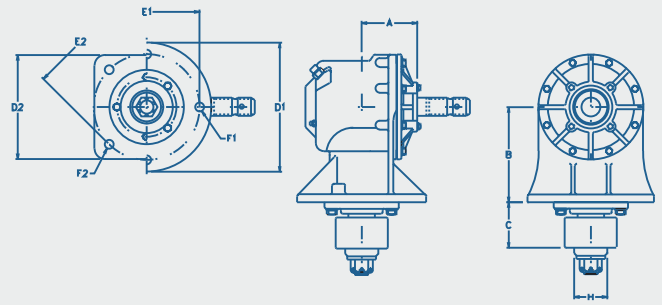


OMNI GEAR®

Rotary Cutter Gear Drives

Creating Value for our Customers
www.OmniGear.com

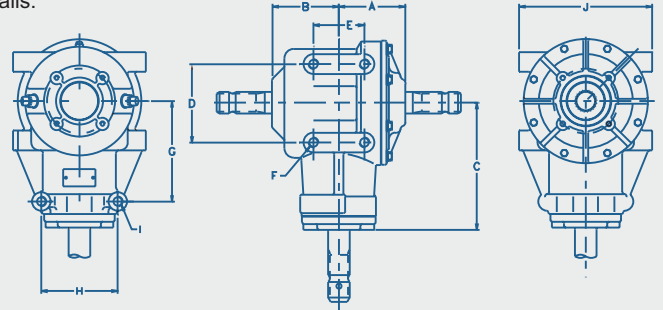
Physical Dimensions



Right Angle Drives

Model	Maximum Weight of Unit		CL to Thru Cap A		CL to Flange B		Flange to Hub Pilot C		Hub Pilot Diameter H		Flange Diameter D1		Bolt Hole Pattern E1		Mounting Holes F1		Flange Square Size D2		Bolt Hole Pattern E2		Mounting Holes F2	
	lb	kg	in	mm	in	mm	in	mm	in	mm	in	mm	in	mm	in	mm	in	mm	in	mm	in	mm
RC-20	34	15	3.0	76	6.5	165	2.40	61.0	-	-	-	-	-	-	-	-	6.18	157	6.8	171.5	(4) 0.67	(4) 17
RC-27	47	21	3.5	88	6.4	164	2.40	61.0	-	-	-	-	-	-	-	-	6.18	157	6.8	171.5	(4) 0.67	(4) 17
RC-30	51	23	3.9	100	6.4	164	3.30	84.0	2.5	63.5	-	-	-	-	-	-	6.89	175	6.8	171.5	(4) 0.67	(4) 17
RC-51	56	25	3.7	94	6.4	164	3.50	88.9	2.5	63.5	-	-	-	-	-	-	6.89	175	6.8	171.5	(4) 0.67	(4) 17
RC-61	81	37	4.2	107	7.2	183	3.50	88.9	2.5	63.5	9.5	242.0	8.0	203.2	(4) 0.787	(4) 20	-	-	-	-	-	-
RC-71	83	38	4.2	107	7.2	183	3.50	88.9	2.5	63.5	9.5	242.0	8.0	203.2	(4) 0.787	(4) 20	-	-	-	-	-	-
RC-81	98	45	4.6	116	11.0	279	3.50	88.9	2.5	63.5	9.6	245.0	8.0	203.2	(4) 0.787	(4) 20	-	-	-	-	-	-
RC-100	96	44	4.8	121	7.1	180	3.78	96.0	2.5	63.5	9.4	240.0	8.0	203.2	(4) 0.787	(4) 20	-	-	-	-	-	-
RC-130S	109	49	5.1	130	7.1	180	4.00	102.0	2.9	73.0	9.8	250.0	8.0	203.2	(6) 0.807	(6) 21	-	-	-	-	-	-
RC-130L	120	54	5.1	130	7.1	180	7.20	184.0	3.8	96.0	9.8	250.0	8.0	203.2	(6) 0.807	(6) 21	-	-	-	-	-	-
RC-145	110	50	5.6	142	8.9	225	8.05	204.5	3.8	96.0	10.2	260.0	8.0	203.2	(6) 0.807	(6) 21	-	-	-	-	-	-
RC-150L	145	66	5.1	130	11.0	280	7.20	184.0	3.8	96.0	9.8	250.0	8.0	203.2	(6) 0.807	(6) 21	-	-	-	-	-	-
RC-200	220	100	6.4	162	9.5	241	8.00	203.0	5.3	135.0	11.8	300.0	10	254.0	(6) 0.905	(6) 23	-	-	-	-	-	-

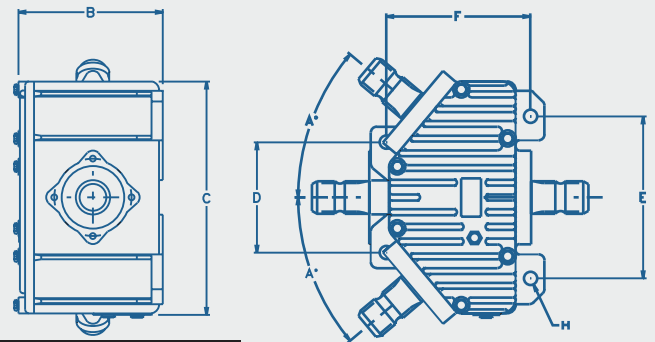
Custom shafts, oil ports and mounting hole positions available. Contact Omni Gear for details.



Divider Drives- Side Mount 90°

Model	Maximum Weight of Unit		CL to Thru Cap A		CL to Hsg. end B		CL to Hsg. end C		Bolt Hole Pattern D		Bolt Hole Pattern E		Bolt Hole Pattern H		CL to Mtg. Holes G		Mounting Holes F		Mounting Holes I		Mounting Span J	
	lb	kg	in	mm	in	mm	in	mm	in	mm	in	mm	in	mm	in	mm					in	mm
RC-40T	45	20	3.9	100	2.8	71	7.5	191	4.5	113.0	2.75	69.9	4.75	120.7	5.75	146	(8) 5/8"-11UNC-2B		(8) 5/8"-11UNC-2B		6.0	152.4
RC-61T	70	32	4.2	107	4.3	108	8.0	204	5.0	127.0	3.25	82.6	4.88	123.8	6.40	162.7	(8) 5/8"-11UNC-2B		(2) 5/8"-11UNC-2B		8.0	203.2

Custom shafts, oil ports and mounting hole positions available. Contact Omni Gear for details.



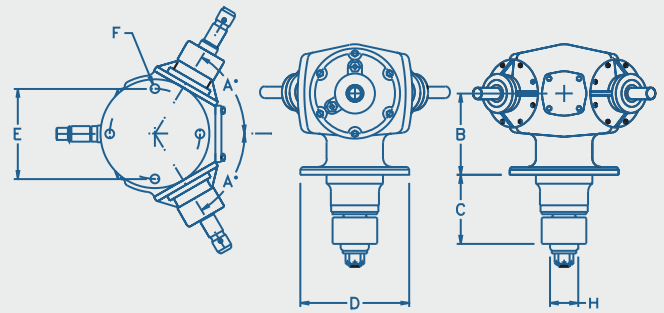
Divider Drives 40°

Model	Maximum Weight of Unit		Shaft Angle A		Gearbox Height B		Gearbox Width C		Bolt Hole Pattern D		Bolt Hole Pattern E		Bolt Hole Pattern F		Mounting Holes H	
	lb	kg	in	mm	in	mm	in	mm	in	mm	in	mm	in	mm		
RCD-90	80	36	40	7.7	196	12.4	315	5.9	150	8.7	220	7.7	196	(4) 18mm thru		
RCD-101	131	59	40	8.3	210	20.5	520	5.7	144	5.7	144	5.7	144	(4) 3/4"-10UNC-2B		

Custom shafts, oil ports and mounting hole positions available. Contact Omni Gear for details.



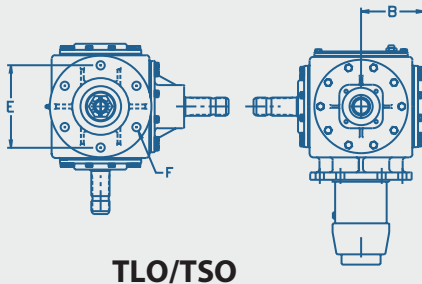
Physical Dimensions



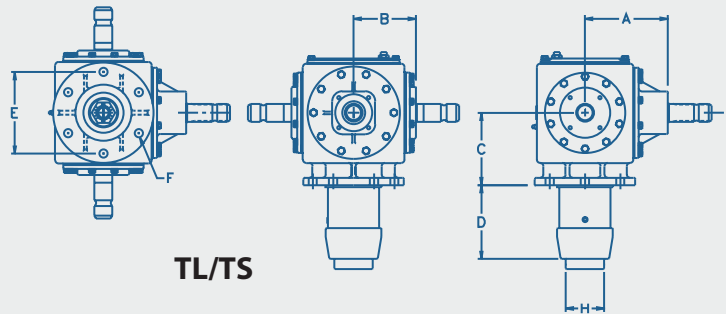
Divider Drives-60°

Model	Maximum Weight of Unit		Shaft Angle A	CL to Flange B		Flange to Hub Pilot C		Hub Pilot Diameter H		Flange Diameter D		Bolt Hole Pattern E		Mounting Holes F	
	lb	kg		in	mm	in	mm	in	mm	in	mm	in	mm	in	mm
RC-110	140	64	60	7.2	183	6.1	156	2.5	64	9.6	245	8.0	203	(4) 0.787	(4) 20.0
RC-110Y	110	60	60	7.2	183	-	-	-	-	9.6	245	8.0	203	(4) 0.787	(4) 20.0

Custom shafts, oil ports and mounting hole positions available. Contact Omni Gear for details.



TLO/TSO



TL/TS

Divider Drives- Base Mount 90°

Model	Maximum Weight of Unit		CL to Thru Cantilevered Cap A		CL to Thru Cap B		CL to Flange C		Flange to Hub Pilot D		Hub Pilot Diameter H		Bolt Hole Pattern E		Mounting Holes F	
	lb	kg	in	mm	in	mm	in	mm	in	mm	in	mm	in	mm	in	mm
RC-65TL	88	40	6.5	164	4.3	110	7.2	183	3.5	88.9	2.50	63.5	8.00	203.2	(4) 0.787	(4) 20.0
RC-65TLO	88	40	6.5	164	4.3	110	7.2	183	3.5	88.9	2.50	63.5	8.00	203.2	(4) 0.787	(4) 20.0
RC-91TL	200	91	4.6	116	7.5	191	10.9	278	3.5	88.9	2.50	63.5	8.00	203.2	(4) 0.787	(4) 20.0
RC-91TLO	200	91	4.6	116	7.5	191	10.9	278	3.5	88.9	2.50	63.5	8.00	203.2	(4) 0.787	(4) 20.0
RC-130T	125	57	8.1	206	6.1	155	7.1	180	-	-	-	-	8.00	203.2	(6) 0.807	(4) 20.5
RC-130TL	176	80	8.1	206	6.1	155	7.1	180	7.2	184.0	3.78	96.0	8.00	203.2	(6) 0.807	(6) 20.5
RC-130TLO	173	79	8.1	206	6.1	155	7.1	180	7.2	184.0	3.78	96.0	8.00	203.2	(6) 0.807	(6) 20.5
RC-130TS	165	75	8.1	206	6.1	155	7.1	180	4.0	102.0	2.87	73.0	8.00	203.2	(6) 0.807	(6) 20.5
RC-130TSO	162	74	8.1	206	6.1	155	7.1	180	4.0	102.0	2.87	73.0	8.00	203.2	(6) 0.807	(6) 20.5

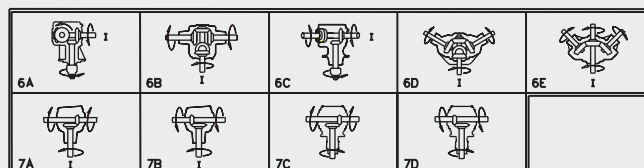
Custom shafts, oil ports and mounting hole positions available. Contact Omni Gear for details.

Configuration Options

Right Angle Drives



Divider Drives



Seals

High quality triple-lip oil seals standard. Other options include Viton seals and cartridge type seals.

Housing

Ductile iron is standard.

Spline Gearfit

Splined gear to shaft connection is standard.

Shaft Extensions

Shaft extensions can be splined, keyed, or with pin holes. Multiple shaft extension units also available.

End Caps

Precision cast iron caps standard.

Clutch

Free wheel clutch optional.

Pressure Relief Plug

Pressure relief plug standard. Optional oil level available.

Lubrication

Units can be filled with mineral or synthetic oil/greases according to application requirements. Gearcase porting for oil flow to lower bearings standard.

Gearing

Forged blank, precision machine cut gearing is standard. Precision forged straight bevel, spiral bevel and lapped spiral bevel gearing also available.

Coatings

Red Oxide primer standard. Other coatings are available.

Bearings

Roller bearings standard in light duty units. ISO tapered bearings standard in larger units.

Shafts

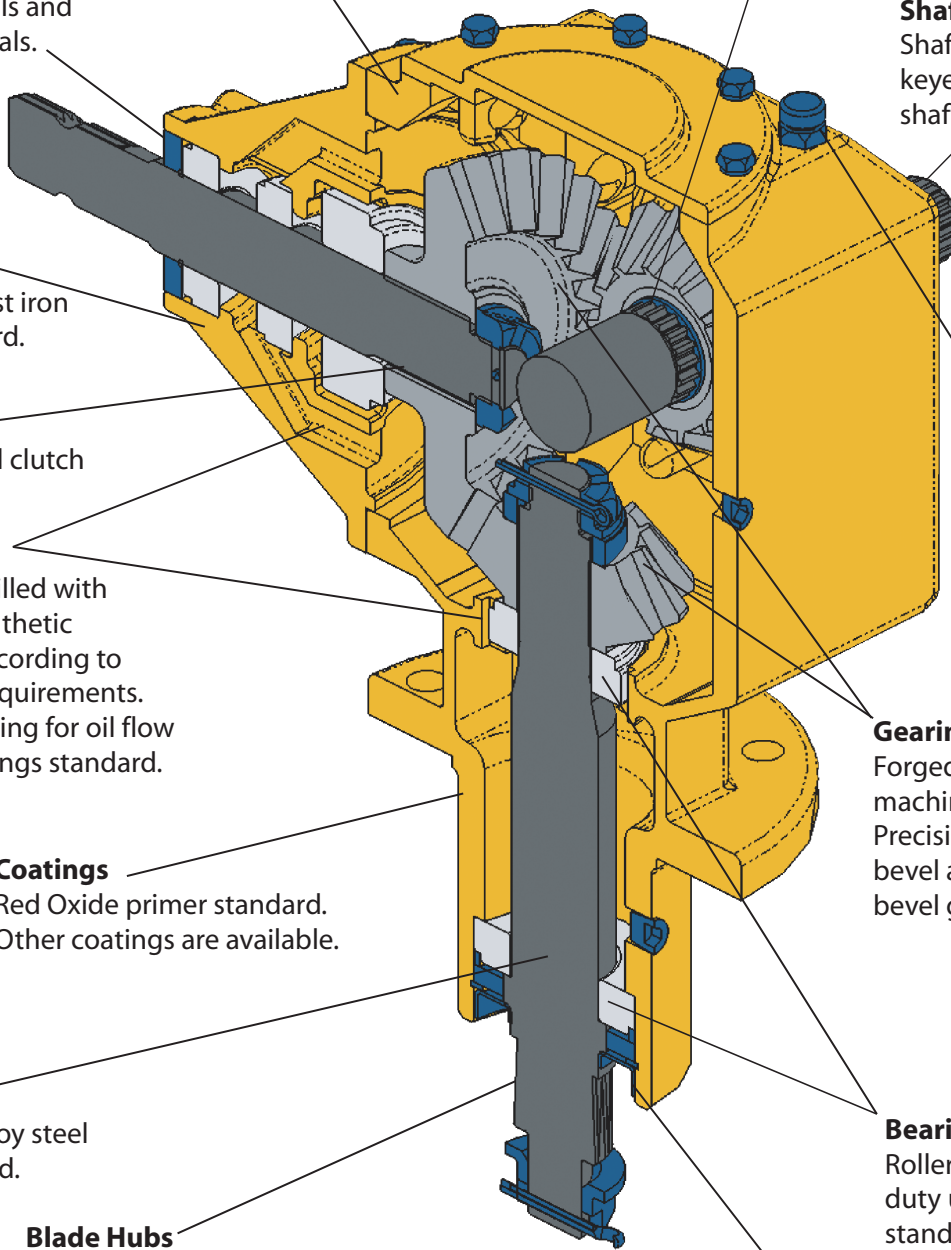
Carburized alloy steel shafts standard.

Blade Hubs

Blade hubs available. Seal protector hubs also available.

Labyrinths

Output seal labyrinths available for extra seal protection.



OMNI GEAR®



E-mail: Sales@OmniGear.com Web: www.OmniGear.com

©2003 Omni Gear®, All rights reserved



Dear Valued Customer:

Standard Terms and Conditions of Sale

The following letter serves to define Omni Gear's Warranty policy effective January 1, 2006. Omni Gear warrants its Products to be free defects in materials and workmanship when installed and maintained consistent with Omni Gear's specifications. Unless otherwise specified below, each Product is warranted for a period of 12 months from the date of retail delivery or 18 months from the date of shipment from Omni Gear's facility, whichever shall first occur. All replacement or spare parts supplied by Omni Gear are warranted for a period of 3 months from the date of shipment from Omni Gear's Facility.

Should any part of an Omni Gear Product be found, under normal use and service, during the warranty period, to be defective, Omni Gear shall repair or replace, at its sole option, said part FOB Omni Gear's facility, Houston, Texas, provided the defective gear drive, in whole, is returned to Omni Gear's facility, charges prepaid, accompanied by a Return Goods Authorization Number ("RGA") and defect report detailing the claimed defect, and provided inspection of the original Product establishes the claimed defect to the satisfaction of Omni Gear. In the event a warranty claim is denied, an Omni Gear Customer Service representative shall contact the customer and advise of the cost to repair the Product not covered under warranty. If the customer requests the Product be repaired, the repaired Product shall carry a Manufacturer's Remanufactured Warranty of 6 months from the date of remanufacture.

Warranty Disclaimer and Limitations of Liability

Omni Gear makes no other warranties. No warranty of merchantability or fitness for a particular purpose is implied. Omni Gear's liability under this warranty is limited to the conditions stated herein. OMNI GEAR SHALL NOT IN ANY EVENT BE LIABLE FOR ANY CONSEQUENTIAL OR INCIDENTAL DAMAGE including, but not limited to expenses, attorney fees, loss of income or profits due to delay or defective material or workmanship and no allowance will be made for repairs, replacements, transportation or freight charges, or alterations UNLESS authorized in writing by

Omni Gear. Omni Gear's warranty is subject to change without notice. This warranty shall not apply to any Product upon which repairs or alterations have been made, improper lubrication including type and frequency, excessive shock loading, improper application or for misused, neglected or incorrectly installed Product. This warranty shall not apply in the event proper gearbox lubrication and service is not maintained.

All gearbox Product lubrication must be flushed and refilled after the first 100 hours of service, and then every 1000 hours thereafter. This warranty shall not apply to seals in the event they have been subjected to heat in excess of 200 degrees, paint, solvents or other chemicals in the assembly or painting processes. Any Omni Gear Product that remains unused for a period of 6 consecutive months during the warranty period shall not be warranted for leakage due to seal aging. The warranty for bearings shall be limited to the warranty provided by the bearing manufacturer. No Product will be eligible for warranty if rust or corrosion has started on internal surfaces.

The terms and conditions set forth herein, together with any amendments, modifications and any different terms or conditions expressly accepted by Omni Gear in writing, shall constitute the entire Agreement concerning the Product sold, and there are no oral or other representations or agreements which pertain thereto. This Agreement shall be governed in all respects by the law of the State of Texas. Legal proceedings arising out of the terms of Omni Gear's warranty must be commenced within one (1) year of the accrual of the cause of action or be forever barred.

Note: The information shown online and in all catalogs is for general purposes only. Not to be used for manufacture, design or application review. OMNI GEAR reserves the right to update or change its products; therefore the information shown is subject to change. Bearing curves are supplied for design reference purposes only. They are intended to help illustrate the importance of radial load position relative to the gearbox. For detailed analysis or application review, contact OMNI GEAR engineering.

Exceptions

Exceptions to Omni Gear's stated Warranty Policy must be in writing, and made a part of this Limited Warranty. Customer Product Group Limited Warranty Effective Date