

OMNI GEAR®

Planetary Gear Drives

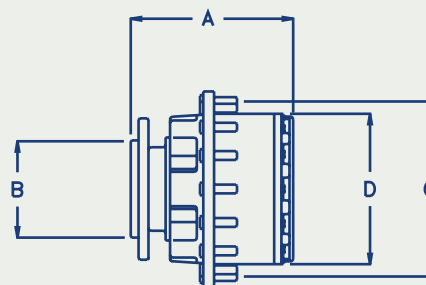
Creating Value for our Customers
www.OmniGear.com

Performance Data

Model	Maximum Intermittent Output Torque*		Maximum Radial Load Capacity		Maximum Input Speed rpm	Ratios
	lb-in	Nm	lb	kg		
Wheel Drives						
WS02	15,000	1,695	7,000	3,182	4,000	4.60:1
WD02	15,000	1,695	7,000	3,182	4,000	11.96 to 12.97:1
WD03	30,000	3,390	7,000	3,182	4,000	18.25 to 68.00:1
WS06	25,000	2,825	10,000	4,545	3,500	2.75 to 4.81:1
WD06	50,000	5,650	10,000	4,545	5,000	13.06 to 32.76:1
WS12	60,000	6,780	16,000	7,273	3,500	3.43 to 6.07:1
WD12	100,000	11,300	16,000	7,273	5,000	18.67 to 49.01:1
Shaft Output Drives						
SS02	15,000	1,695	7,000	3,182	4,000	3.60:1
SD02	15,000	1,695	7,000	3,182	4,000	10.96 to 12.97:1
SS06	25,000	2,825	10,000	4,545	3,500	3.75 to 5.81:1
SD06	50,000	5,650	10,000	4,545	5,000	14.06 to 33.76:1
SS12	60,000	6,780	16,000	7,273	3,500	4.43 to 7.07:1
SD12	100,000	11,300	16,000	7,273	5,000	19.67 to 50.01:1
Flange Output Drives						
SS02	15,000	1,695	7,000	3,182	4,000	3.60:1
SD02	15,000	1,695	7,000	3,182	4,000	10.96 to 12.97:1
SS06	25,000	2,825	10,000	4,545	3,500	3.75 to 5.81:1
SD06	50,000	5,650	10,000	4,545	5,000	14.06 to 33.76:1
SS12	60,000	6,780	16,000	7,273	3,500	4.43 to 7.07:1
SD12	100,000	11,300	16,000	7,273	5,000	19.67 to 50.01:1

* Contact Omni Gear or refer to Omni Gear's main Planetary catalog for various ratings for your application.

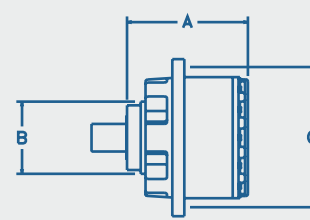
Physical Dimensions



Wheel Drives

Model	Maximum Weight of Unit		Rim Pilot Diameter D		Mtg. Pilot Diameter B		B.C. Diameter C		Overall Length A	
	lb	kg	in	mm	in	mm	in	mm	in	mm
WD02	65	30	6.0	152	7.00	177.8	8.00	203.20	8.2	208
WD03A	90	41	7.9	200	5.25	133.4	9.50	241.30	10.2	260
WD03B	90	41	7.9	200	7.00	177.8	9.50	241.30	10.2	260
WS06A1	85	39	7.9	200	6.88	174.6	9.50	241.30	10.6	269
WS06A2	85	39	7.9	200	5.25	133.4	9.50	241.30	10.6	269
WS06B1	85	39	7.9	200	6.88	174.6	9.50	241.30	10.6	269
WS06B2	85	39	7.9	200	7.00	177.8	9.50	241.30	10.6	269
WD06A1	100	45	7.9	200	6.88	174.6	9.50	241.30	12.1	307
WD06A2	100	45	7.9	200	5.25	133.4	9.50	241.30	12.1	307
WD06B1	100	45	7.9	200	6.88	174.6	9.50	241.30	12.1	307
WD06B2	100	45	7.9	200	7.00	177.8	9.50	241.30	12.1	307
WS12BH1	156	71	10.6	270	6.88	174.6	12.38	314.33	10.5	267
WS12CH3	156	71	11.0	280	7.65	194.2	13.19	334.95	10.5	267
WD12BH1	210	96	10.6	270	6.88	174.6	12.38	314.33	12.4	315
WD12CH3	210	96	11.0	280	7.65	194.2	13.19	334.95	12.4	315

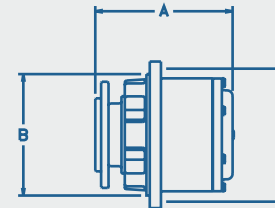
Physical Dimensions



Shaft Output Drives

Model	Maximum Weight of Unit		Overall Length A		Pilot Mtg. Diameter B		B.C. Diameter C	
	lb	kg	in	mm	in	mm	in	mm
SS02	65	30	6.1	156	5.00	127.0	5.00	127.0
SS06AB	85	39	8.1	206	8.00	203.2	9.50	241.3
SS06AC	85	39	9.8	248	8.00	203.2	9.50	241.3
SD06AB	100	45	9.6	244	8.00	203.2	9.50	241.3
SD06C	100	45	11.3	286	8.00	203.2	9.50	241.3
SS12H1A	156	71	10.6	270	11.26	286.0	12.38	314.3
SS12H1B	156	71	8.7	220	11.26	286.0	12.38	314.3
SS12H1C	156	71	10.6	268	11.26	286.0	12.38	314.3
SS12H3A	156	71	10.6	270	11.02	279.9	13.19	335.0
SS12H3B	156	71	8.6	219	11.02	279.9	13.19	335.0
SS12H3C	156	71	10.6	268	11.02	279.9	13.19	335.0
SD12H1A	210	96	12.5	318	11.26	286.0	12.38	314.3
SD12H1B	210	96	10.5	268	11.26	286.0	12.38	314.3
SD12H1C	210	96	12.5	316	11.26	286.0	12.38	314.3
SD12H3A	210	96	12.5	318	11.02	279.9	13.19	335.0
SD12H3B	210	96	10.5	267	11.02	279.9	13.19	335.0
SD12H3C	210	96	12.4	316	11.02	279.9	13.19	335.0

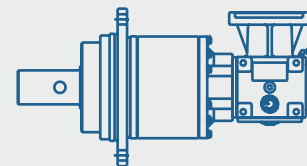
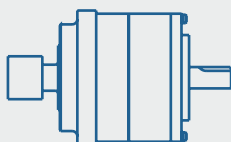
Custom shafts, oil ports and housing flanges available. Contact Omni Gear for details.



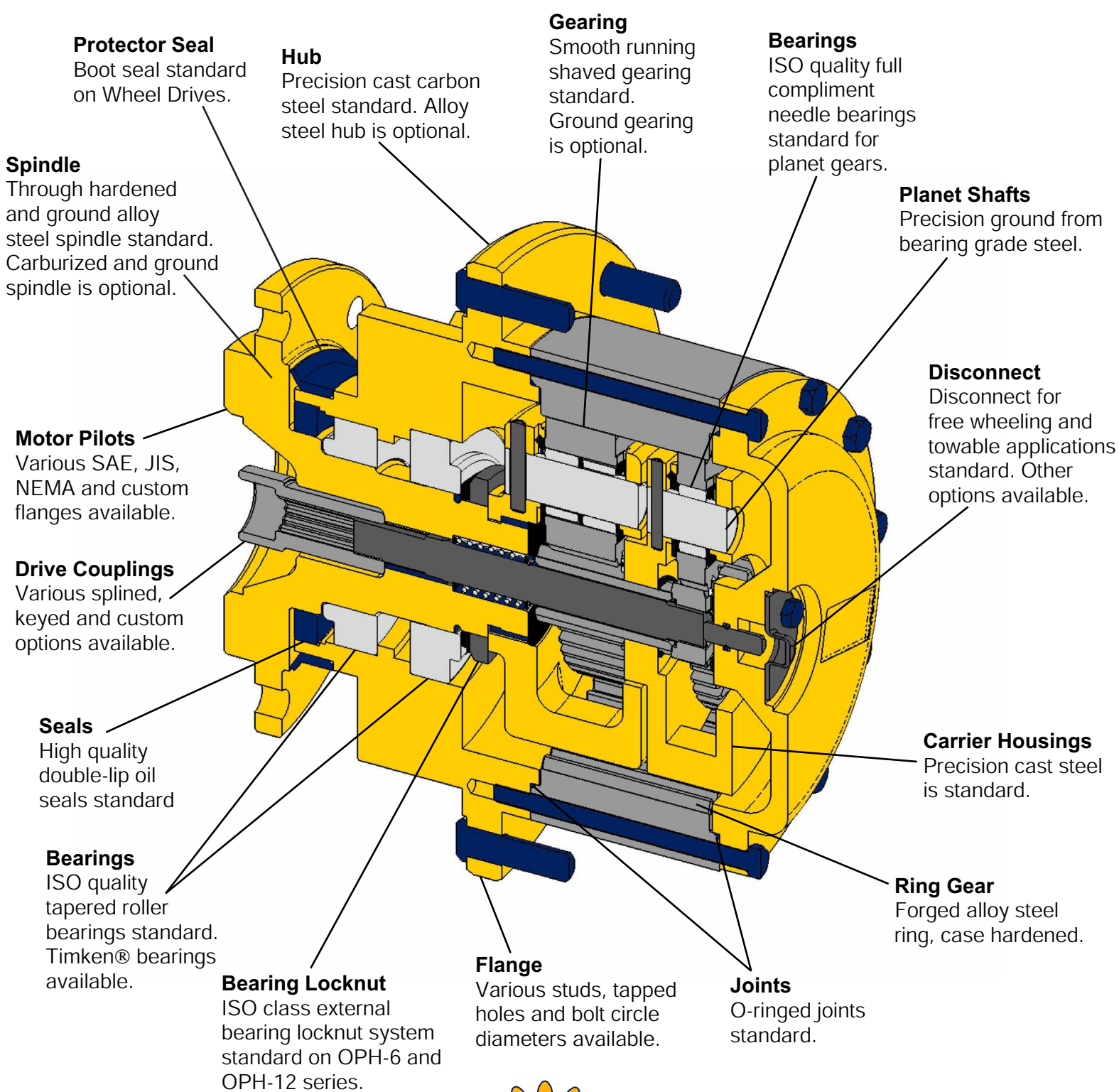
Flange Output Drives

Model	Maximum Weight of Unit		Overall Length A		Pilot Mtg. Diameter B		B.C. Diameter C	
	lb	kg	in	mm	in	mm	in	mm
SS02	65	30	6.9	176	5.00	127.0	5.00	127.0
SS06AB	85	39	10.8	274	8.00	203.2	9.50	241.3
SS06AC	85	39	12.4	316	8.00	203.2	9.50	241.3
SD06AB	100	45	10.8	274	8.00	203.2	9.50	241.3
SD06C	100	45	12.4	316	8.00	203.2	9.50	241.3
SS12H1A	156	71	11.5	292	11.26	286.0	12.38	314.3
SS12H1B	156	71	9.5	241	11.26	286.0	12.38	314.3
SS12H1C	156	71	11.4	290	11.26	286.0	12.38	314.3
SS12H3A	156	71	11.5	291	11.02	279.9	13.19	335.0
SS12H3B	156	71	9.5	241	11.02	279.9	13.19	335.0
SS12H3C	156	71	11.4	289	11.02	279.9	13.19	335.0
SD12H1A	210	96	13.4	340	11.26	286.0	12.38	314.3
SD12H1B	210	96	11.4	289	11.26	286.0	12.38	314.3
SD12H1C	210	96	13.3	338	11.26	286.0	12.38	314.3
SD12H3A	210	96	13.4	339	11.02	279.9	13.19	335.0
SD12H3B	210	96	11.4	289	11.02	279.9	13.19	335.0
SD12H3C	210	96	13.3	337	11.02	279.9	13.19	335.0

Custom flanges, oil ports and housing flanges available. Contact Omni Gear for details.



Custom Planetary assemblies also available: Shaft Input, Right Angle Input, Low Backlash Swing Drives; Please contact Omni Gear for your application requirements.



OMNI GEAR®



E-mail: Sales@OmniGear.com Web: www.OmniGear.com

©2003 Omni Gear®, All rights reserved



Dear Valued Customer:

Standard Terms and Conditions of Sale

The following letter serves to define Omni Gear's Warranty policy effective January 1, 2006. Omni Gear warrants its Products to be free defects in materials and workmanship when installed and maintained consistent with Omni Gear's specifications. Unless otherwise specified below, each Product is warranted for a period of 12 months from the date of retail delivery or 18 months from the date of shipment from Omni Gear's facility, whichever shall first occur. All replacement or spare parts supplied by Omni Gear are warranted for a period of 3 months from the date of shipment from Omni Gear's Facility.

Should any part of an Omni Gear Product be found, under normal use and service, during the warranty period, to be defective, Omni Gear shall repair or replace, at its sole option, said part FOB Omni Gear's facility, Houston, Texas, provided the defective gear drive, in whole, is returned to Omni Gear's facility, charges prepaid, accompanied by a Return Goods Authorization Number ("RGA") and defect report detailing the claimed defect, and provided inspection of the original Product establishes the claimed defect to the satisfaction of Omni Gear. In the event a warranty claim is denied, an Omni Gear Customer Service representative shall contact the customer and advise of the cost to repair the Product not covered under warranty. If the customer requests the Product be repaired, the repaired Product shall carry a Manufacturer's Remanufactured Warranty of 6 months from the date of remanufacture.

Warranty Disclaimer and Limitations of Liability

Omni Gear makes no other warranties. No warranty of merchantability or fitness for a particular purpose is implied. Omni Gear's liability under this warranty is limited to the conditions stated herein. OMNI GEAR SHALL NOT IN ANY EVENT BE LIABLE FOR ANY CONSEQUENTIAL OR INCIDENTAL DAMAGE including, but not limited to expenses, attorney fees, loss of income or profits due to delay or defective material or workmanship and no allowance will be made for repairs, replacements, transportation or freight charges, or alterations UNLESS authorized in writing by

Omni Gear. Omni Gear's warranty is subject to change without notice. This warranty shall not apply to any Product upon which repairs or alterations have been made, improper lubrication including type and frequency, excessive shock loading, improper application or for misused, neglected or incorrectly installed Product. This warranty shall not apply in the event proper gearbox lubrication and service is not maintained.

All gearbox Product lubrication must be flushed and refilled after the first 100 hours of service, and then every 1000 hours thereafter. This warranty shall not apply to seals in the event they have been subjected to heat in excess of 200 degrees, paint, solvents or other chemicals in the assembly or painting processes. Any Omni Gear Product that remains unused for a period of 6 consecutive months during the warranty period shall not be warranted for leakage due to seal aging. The warranty for bearings shall be limited to the warranty provided by the bearing manufacturer. No Product will be eligible for warranty if rust or corrosion has started on internal surfaces.

The terms and conditions set forth herein, together with any amendments, modifications and any different terms or conditions expressly accepted by Omni Gear in writing, shall constitute the entire Agreement concerning the Product sold, and there are no oral or other representations or agreements which pertain thereto. This Agreement shall be governed in all respects by the law of the State of Texas. Legal proceedings arising out of the terms of Omni Gear's warranty must be commenced within one (1) year of the accrual of the cause of action or be forever barred.

Note: The information shown online and in all catalogs is for general purposes only. Not to be used for manufacture, design or application review. OMNI GEAR reserves the right to update or change its products; therefore the information shown is subject to change. Bearing curves are supplied for design reference purposes only. They are intended to help illustrate the importance of radial load position relative to the gearbox. For detailed analysis or application review, contact OMNI GEAR engineering.

Exceptions

Exceptions to Omni Gear's stated Warranty Policy must be in writing, and made a part of this Limited Warranty. Customer Product Group Limited Warranty Effective Date