

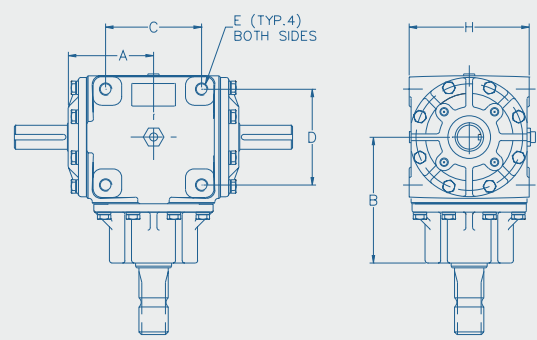


**OMNI GEAR®**

**Universal Bevel Gear Drives**

**Creating Value for our Customers**  
**[www.OmniGear.com](http://www.OmniGear.com)**

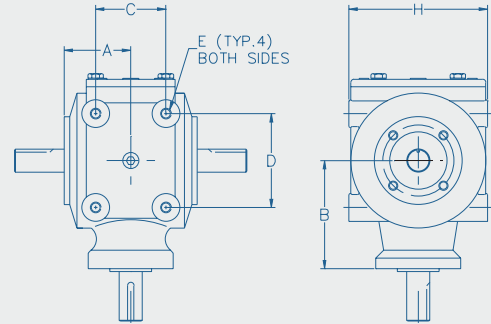
# Physical Dimensions



## LR Series

Model	Maximum Weight of Unit		CL to Thru Cap A		CL to Cant. Cap B		Bolt Hole Pattern C		Bolt Hole Pattern D		Mounting Holes E	Mounting Height H	
	lb	kg	in	mm	in	mm	in	mm	in	mm		in	mm
LR-100	10	5	2.5	63	3.7	94	3.1	79.5	3.1	79.5	5/16"-18UNC	3.7	93
LR-200	23	10	3.5	89	5.0	127	4.3	107.9	4.3	107.9	3/8"-16UNC	4.1	105
LR-400	42	19	4.0	102	5.9	150	4.5	114.3	4.5	114.3	1/2"-13UNC	5.6	143
LR-500	98	45	5.4	136	8.8	223	6.0	152.4	6.0	152.4	1/2"-13UNC	7.5	190
LR-600	185	84	6.7	171	9.4	239	7.0	177.8	7.0	177.8	5/8"-11UNC	10.0	254

Custom shafts, oil ports and mounting hole positions available. Contact Omni Gear for details.



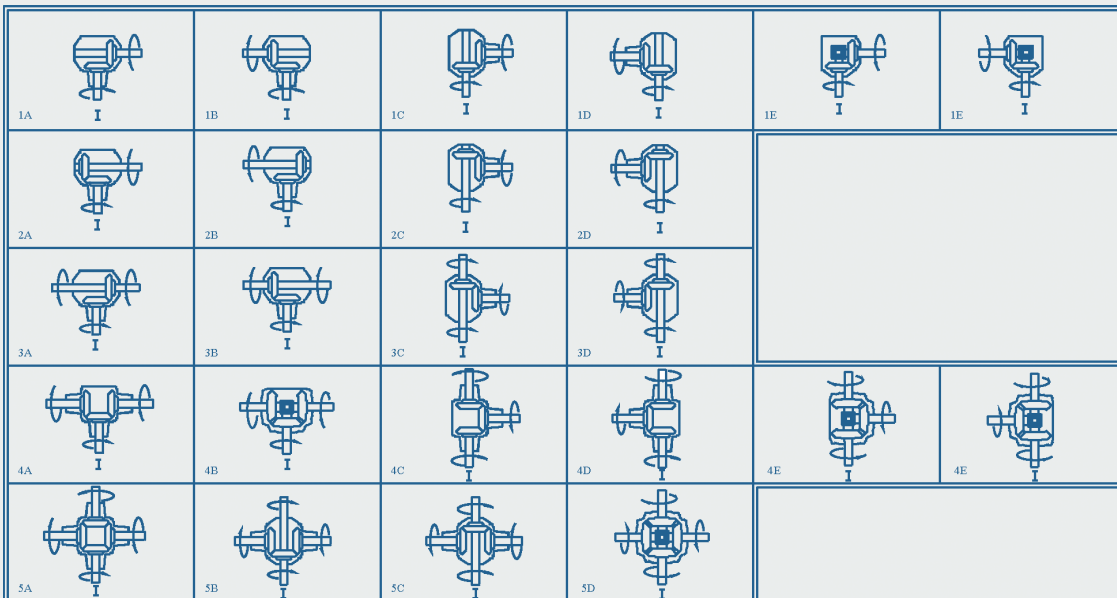
## HR Series

Model	Maximum Weight of Unit		CL to Thru Cap A		CL to Cant. Cap B		Bolt Hole Pattern C		Bolt Hole Pattern D		Mounting Holes E	Mounting Height H	
	lb	kg	in	mm	in	mm	in	mm	in	mm		in	mm
HR-200	25	11	2.8	72	4.6	117	3.0	75.9	4.0	101.6	3/8"-16UNC	5.9	150
HR-400	49	22	3.4	85	6.3	160	3.3	84.0	4.5	114.3	1/2"-13UNC	7.5	190
HR-500	65	30	4.4	111	8.0	202	3.9	100.0	5.5	140.0	5/16"-18UNC	8.8	225
HR-600	82	37	4.8	121	8.9	225	4.7	119.9	5.9	149.9	5/16"-18UNC	9.8	250

Custom shafts, oil ports and mounting hole positions available. Contact Omni Gear for details.

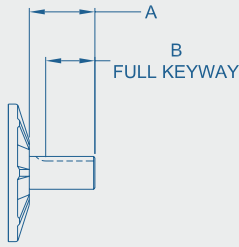
# Unit Configurations

Center post configurations are only available on the LR series. Some configurations are not available in the HR series.



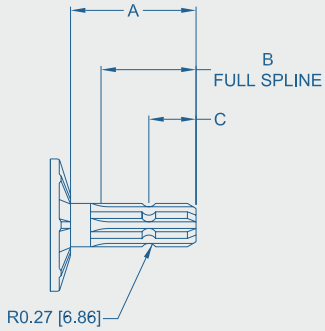
# Shaft Options

## Keyed Shaft Options



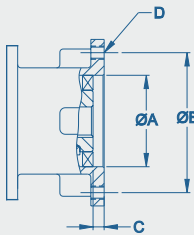
Code	Shaft Diameter		Key Size		Extension Length A		Full Keyway B	
	in	mm	in	mm	in	mm	in	mm
K1	3/4"	19	3/16"	4.76	1.38"	35.0	1.25"	31.8
K2	1"	25	1/4"	6.35	2.0"	50.8	1.5"	38.1
K4	1-3/8"	35	5/16"	7.94	2.6"	66.0	1.97"	50.0
K5	1-1/2"	38	3/8"	9.53	2.75"	70.0	1.97"	50.0
K6	2"	51	1/2"	12.7	3.0"	76.2	2.6"	66.0
K7	1-3/4"	19	1/2"	12.7	3.0"	76.2	2.38"	60.0
K8	1-3/4"	19	3/8"	9.53	2.75"	70.0	1.97"	50.0

## Splined Shaft Options



Code	Shaft Diameter		Spline Teeth	Extension Length A		Full Spline B		QD Groove C	
	in	mm		in	mm	in	mm	in	mm
S1	1-3/8"	35	6	3.97"	101	3.0"	76.2	1.5"	38.1
S2	1-3/8"	35	21	3.82"	97	2.5"	63.5	1.0"	25.4
S3	1-3/4"	44	20	4.25"	108	3.5"	88.9	1.5"	38.1
S4	1-3/8"	35	6	3.78"	96	3.0"	76.2	1.5"	38.1
S5	1-3/4"	44	6	3.97"	101	3.0"	76.2	1.5"	38.1

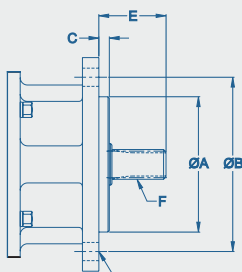
## Hydraulic Flange Options



SAE Female Mount

Code	Type	Motor Pilot Diameter A		Mounting Diameter B.C.		Motor Pilot Depth C		Mounting Holes D	Internal Spline E
		in	mm	in	mm	in	mm		
H1	SAE A	3.251"-3.255"	82.58-82.70	4.188"	106.40	0.39"	10.0	(2) 3/8"-16UNC-2B	1" with 1/4" Keyway
H2	SAE B	4.001"-4.006"	101.63-101.75	5.75"	146.05	0.41"	10.4	(2) 1/2"-13UNC-2B	13T-16/32DP
H3	SAE C	5.001"-5.006"	127.03-127.15	7.125"	180.98	0.59"	15.0	(2) 5/8"-11UNC-2B	14T-12/24DP

Metric pump flanges available. Contact Omni Gear for details.

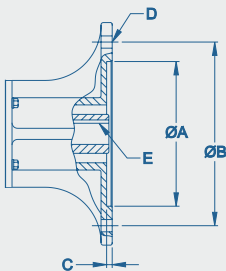


SAE Male Mount

Code	Type	Motor Pilot Diameter A		Mounting Diameter B.C.		Motor Pilot Length C		Mounting Holes D	External Spline E
		in	mm	in	mm	in	mm		
H4	SAE A	3.251"-3.255"	82.58-82.70	4.188"	106.40	0.25"	6.4	(2) 3/8"-16UNC-2B	13T-16/32DP
H5	SAE B	4.001"-4.006"	101.63-101.75	5.75"	146.05	0.38"	9.7	(2) 1/2"-13UNC-2B	15T-16/32DP
H6	SAE C	5.001"-5.006"	127.03-127.15	7.125"	180.98	0.50"	12.7	(2) 5/8"-11UNC-2B	14T-12/24DP

Metric pump flanges available. Contact Omni Gear for details.

## Electric Motor Flange Option



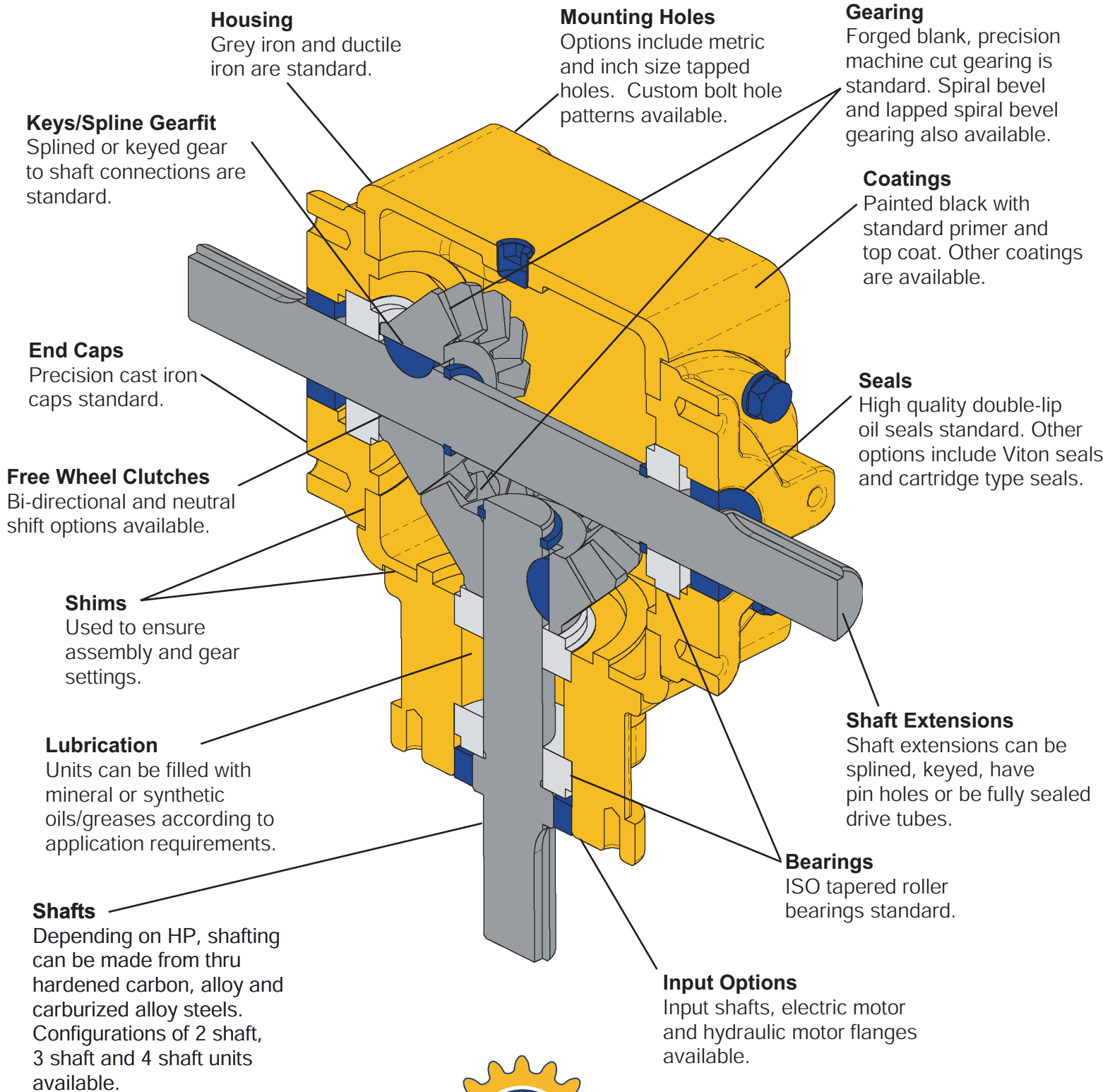
NEMA Mount

Code	Type	Motor Pilot Diameter A		Mounting Diameter B.C.		Motor Pilot Depth C		Mounting Holes D	Internal Bore E
		in	mm	in	mm	in	mm		
E1	NEMA 56	4.500"-4.503"	114.30-114.37	6.50"	165.1	0.16"	4.0	(4) 0.43"[10.9] Thru	5/8" with 3/16" Keyway
E2	NEMA 140	4.500"-4.503"	114.30-114.37	6.50"	165.1	0.16"	4.0	(4) 0.43"[10.9] Thru	7/8" with 3/16" Keyway
E3	NEMA 180	8.500"-8.503"	127.03-127.15	9.00"	228.6	0.23"	5.8	(4) 0.55"[13.9] Thru	1 1/8" with 1/4" Keyway

IEC flanges available. Contact Omni Gear for details.

Other Custom Options Available. Contact Omni Gear for Details.





**OMNI GEAR®**



E-mail: [Sales@OmniGear.com](mailto:Sales@OmniGear.com) Web: [www.OmniGear.com](http://www.OmniGear.com)

©2003 Omni Gear®, All rights reserved